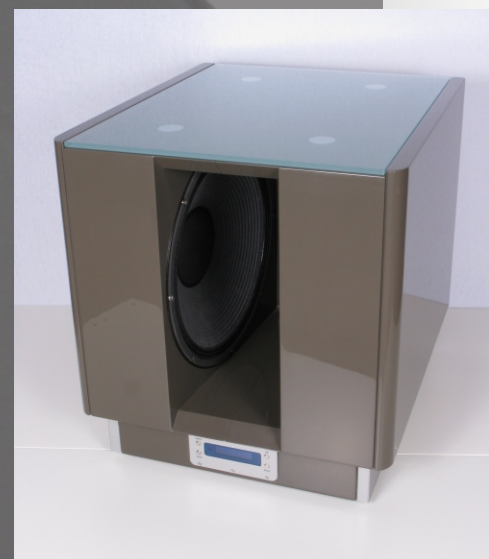


Technical Specifications and Data of separate active driven Dipole Subwoofer – Modul DiSUB X15 (IVT)¹⁾:

Principle:	Linkwitz - Dipole, active, with DSP, FIR filter and parametric equalizer. Two professional 15", (38 cm) PA - Chassis (Beyma LX Series) in Push-Push alignment, optimized 3 chamber W - frame alignment for acoustic guidance, impulse compensated and vibration less velocity transformer (IVT).
Recommended crossover:	65 Hz, 24 dB/Oct.
Low pass filter:	40Hz - 500Hz, filter characteristic 1. to 4. order Butterworth
Integrated digital (Class D) amplifier power:	1000 Watt@4 Ohms , high damping factor (> 2000@8 Ohm), 2 Ohms stable
Integrated digital sound processor DSP: (24 bit Motorola chip with FIR - Filter)	3 parametric equalizers with 4 presets to match room conditions and eliminate standing waves (room modes in l,w,h). Free selectable tuning frequencies btw. 20 Hz und 500 Hz with qualities from 0,5 til 5, Volume: -6dB til + 6dB, all IR remote control and configurable via PC and advanced windows software (RS232)
Low frequency cut off, switch @ 15 Hz:	Subsonic filter recommendet cut off: 15 Hz, 6 to 24 dB/Oct.
Frequency response:	linear from 15 Hz to high cut off
Phase:	free selectable from 0° to 270°
Time delay:	from 0 to 6 m
Max. peak power rating of the two chassis with program material	2,8 KW
Undistorted compression free max sound pressure level @ 50 Hz per unit	124 dB
Total vibration area	1.800 cm²
max linear displacement of both diaphragm X _{max}	20 mm (80 mm peak to peak)
Dimensions (BxHxT)	510 x 550 x 580 mm
Total weight	75 Kg



des Klangs.

CYGNUS

www.cygnus-audio.de